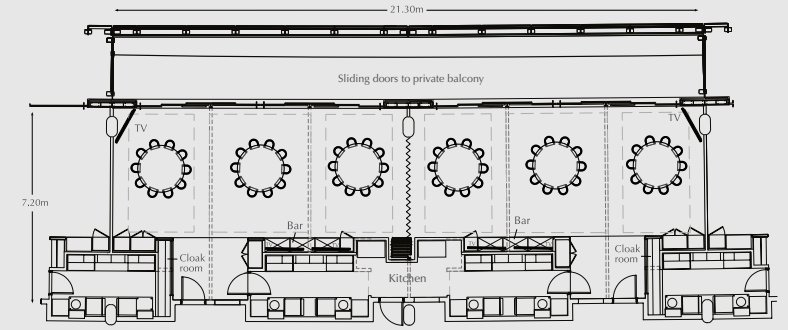
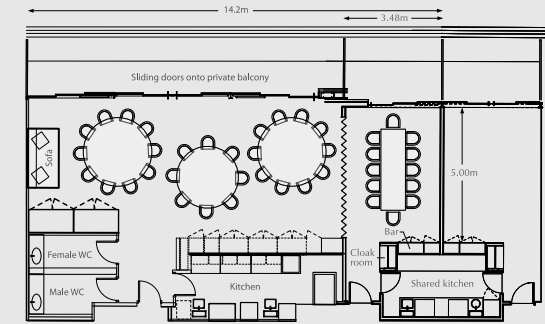
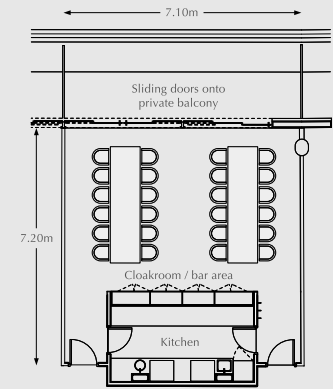
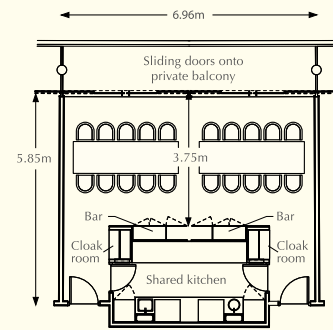
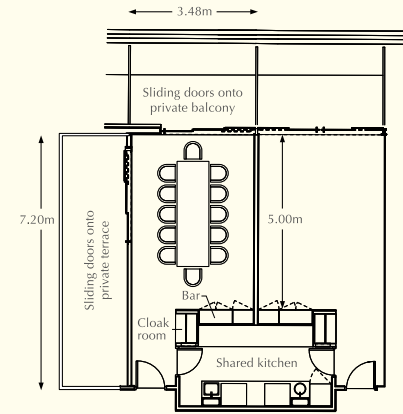
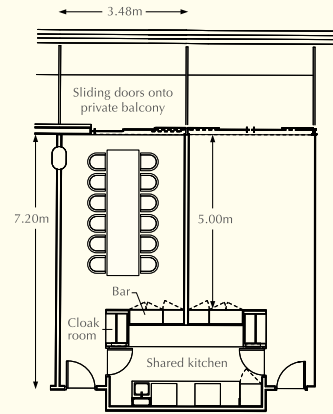
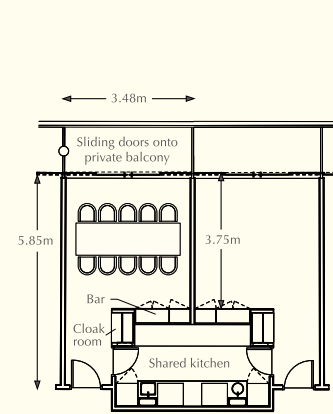


STYLES OF PRIVATE BOXES



10-SEATER SINGLE BOXES

These are all situated on Level 6. They will seat 10 for silver service or accommodate up to 14 for a buffet. Each box has a narrow balcony overlooking the track, without external seating.

12-SEATER SINGLE BOXES

The majority of single boxes fall into this category. They will seat 12 for silver service or accommodate up to 18 for a buffet. These boxes are located on Levels 2 to 5. Each box has a private balcony with 6 fixed folding chairs.

12-SEATER TERRACE BOXES

The majority of terrace boxes seat 12 guests for silver service or accommodate up to 18 for a buffet. There are two double terrace boxes that seat 24 for silver service or accommodate up to 36 for a buffet. The terrace boxes are situated at the far western and eastern ends of the stand and have access to a side terrace with casual seating offering a spacious area in which to entertain. Each box also has a private balcony with 6 fixed folding chairs.

20-SEATER DOUBLE BOXES

Situated on Level 6, these boxes will seat 20 for silver service or accommodate up to 28 for a buffet. They have a private balcony overlooking the track, without external seating.

24-SEATER DOUBLE BOXES

Situated on Level 2 to Level 5, these boxes are suitable for those with a larger party. They will seat 24 for silver service or accommodate up to 36 for a buffet. Each box has a private balcony with 12 fixed folding chairs.

40-SEATER QUAD BOX

Situated on Level 3, this unique box is suitable for those with a large group and will seat 40 for silver service or accommodate up to 60 for a buffet. It has a folding wall on one side, allowing a quarter section of the box to be used as a private anteroom or business centre. The Quad Box has a private balcony with 24 fixed folding chairs.

80-SEATER LONG BOX

(Can also be made into two smaller 'triple' boxes)
Situated on Level 2, the Long Box has been created by combining six individual standard boxes into one superb room overlooking the course, opposite the one furlong marker. It can seat 80 for a silver service meal, or accommodate up to 108 for a buffet. The Long Box can also be split into two smaller 'triple' boxes by use of a substantial folding wall, creating two spacious triple boxes, both of which can seat 40 for a silver service meal or accommodate a maximum of 50 for a buffet.